



FABRICATION



STAMPING



WELDING



POWDER COATING

LARSEN MFG.COM



VERTICAL
FABRICATION
INTEGRATION
MANUFACTURING
STAMPING

ASSEMBLY
 QUALITY
 WAND DEPANELING PACKAGING
 EARLY PRODUCTION
 INVOLVEMENT
 SUPPLIER
 TOOL PPAP DESIGN
 BUILD
 PROTOTYPE
 MACHINING
 WELDING FIBER CNC TIG
 COATING

DEVELOPMENT
 SUPPORT
 TURRET
 SHORT-RUN
 PUNCH
 HIGH SPEED
 MIG
 HARDWARE INSERTION
 POWDER
 EDM
 CONTRACT PROCESSES
 LASER

2026



PACKAGING & DISTRIBUTION



INSPECTION



ASSEMBLY

LARSEN-TELLA.COM



YOUR SINGLE SOURCE PRECISION METAL PRODUCTS

OUR HISTORY

1946:
Leonard Larsen Sr. joins Algonquin Tool & Die.

1955:
Algonquin Tool becomes Electro-Metal Products Corporation. Leonard Larsen joins Electro-Metal Products in 1960s.

1995:
EMP is sold.

LARSEN
MANUFACTURING
PRODUCT THAT EXCEEDS CUSTOMER EXPECTATIONS

1999:
Dave and Denis Larsen, grandsons of Leonard Larsen Sr., open Larsen Manufacturing.

1950s:
Algonquin Tool enters the world of electronics, manufacturing TV tuners and enclosures for the likes of Admiral TV.

1970s:
TV production slows. EMP diversifies into new markets to fuel the company's continued growth.

2001:
Larsen establishes a location in El Paso, TX due to demand for high quality metal stamping in the border region. Larsen El Paso moves in 2006 to a larger facility.

2011:
Larsen purchases a new facility within one mile of its original location.

2009:
Larsen launches a Metal Fabrication Division, increasing the range of capabilities.

2013:
Larsen introduces a Specialty Fabrication Unit to meet demand for large assembly and complex fabrication. Specialty moves to its current location in 2016.

2015:
Larsen adds full scale contract manufacturing and assembly to service, offering to accommodate for customer needs.

2021:
The Paint Division acquires an auto-spray booth.

2018:
The Powder Coat Paint Division is established in Specialty.

2022:
Larsen acquires Tella Tool & Mfg, operating as Larsen Tella LLC.

2023:
Larsen adds 800T press.

2024:
Larsen celebrates 25 years in business.

LARSEN
MANUFACTURING
PRODUCT THAT EXCEEDS CUSTOMER EXPECTATIONS

Metal Stamping & Tooling 1201 Allanson Rd., Mundelein IL | **80,000 Sq/ft**
Fabrication, Assembly & CNC Machining 401 Terrace Dr., Mundelein IL | **86,000 Sq/ft**
Specialty Fabrication, Welding, Powder Coating, Assembly 930 Turret Ct., Mundelein IL | **46,000 Sq/ft**
Logistical Warehousing JIT Inventory Control 1300 Allanson Rd., Mundelein IL | **97,000 Sq/ft**
Metal Stamping & Assembly 12150 Rojas Dr., El Paso TX | **70,000 Sq/ft**
Metal Stamping & Assembly 3401 Nafta Pkwy., Brownsville TX | **51,000 Sq/ft**
Logistical Warehousing JIT Inventory Control 3201 Nafta Pkwy., Brownsville TX | **40,000 Sq/ft**



OUR FACILITIES



MIDWEST HEADQUARTERS
Larsen Manufacturing LLC
1201 Allanson Road
Mundelein, IL 60060



SOUTHWEST
Larsen Manufacturing / El Paso
12150 Rojas Drive, Suite E
El Paso, TX 79936



FABRICATION & MACHINING TECHNOLOGY CENTER
Larsen Manufacturing LLC
401 Terrace Drive
Mundelein, IL 60060



SOUTHEAST
Larsen Tella / Brownsville
3401 Nafta Parkway
Brownsville TX, 78526

VERTICAL INTEGRATION

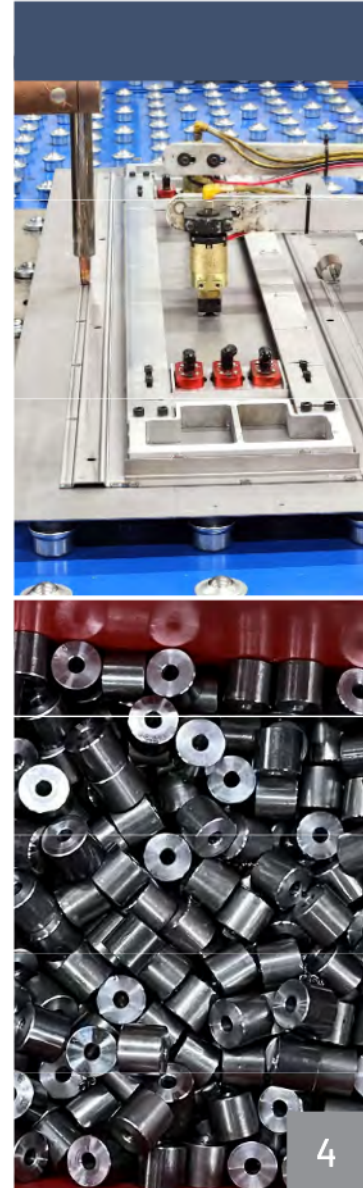
Everything From Concept To Distribution

Larsen Manufacturing, and Larsen Tella, are positioned to provide complete service to the metal manufacturing industry. Because we have the capabilities for any requirement, our customers can rely on a single point of contact to take a project from start to finish.

This one-stop shop approach is a benefit to customers, who no longer need to deal with multiple resources or micro-manage every aspect of the process. We can not only service the client fully, but also supply efficiencies, reduce costs, and cut down on delivery and transportation delays.

By taking direct ownership of various stages of the production process, instead of outsourcing, Larsen is able to streamline its operations with a greater gain to our partners.

Early Supplier Involvement
Design For Manufacturing
Prototype (*Development*)
Fabrication (*Short-run Production*)
Tool Design
Tool Build
PPAP (*Quality*)
Production (*Stamping & All Support Processes*)
Machining
Powder Coating
Contract Manufacturing





DIVERSE MARKETS INCLUDE

- ✔ Automotive
- ✔ Electronics
- ✔ Energy
- ✔ Industrial
- ✔ Medical
- ✔ Appliance
- ✔ Entertainment
- ✔ Aerospace/Aviation
- ✔ Communications



CUSTOMER FOCUS VA/VE

Early Supplier Involvement (ESI)

- Allows time to optimize design efficiencies early on
- Re-design / Re-work is reduced or even eliminated

Drive cost reduction through Design for Manufacturability (DFM)

- Material Type, Material Reduction & Material Optimization
- Hardware Elimination & Alternative Fastening Options
- Automation to limit Secondary Operations
- Finishing Requirements and Options
- Tooling Cost Optimization
- Critical Dimensioning

VA/VE EXAMPLES

Auto Spray Booth:

The addition of the robotic guns automates the paint line as much as possible. The booth expansion allows us to take on more "paint only" opportunities. We will still be capable of handling smaller runs via manual sprayers as needed.

Wrinkle Machine:

This new equipment takes the material and wrinkles it through the machine.





QUALITY FOCUSED



- IATF 16949:2016
- ISO 9001:2015
- ISO 14001:2015



EAGLE Registrations Inc.
SERVICE • INTEGRITY • VALUE



- IATF 16949:2016
- ISO 9001:2015
- ISO 14001:2015



EAGLE Registrations Inc.
SERVICE • INTEGRITY • VALUE

Virtual Audits and Plant Tours Quality Processes Includes:

- Process control & monitoring at all phases of production
- Vision and Laser scanner checks all flat blanks
- All first off parts inspected and green tagged
- Automotive Industry Action Group (AIAG) PPAP and FAI compliant
- We deploy Lean, Six Sigma, 8D, and
- 5S processes

**After safety, quality is Larsen's number 1 priority.
We know that if we make quality parts on a consistent basis
we will never shut down our customers' production lines.**



IN-HOUSE TOOLING

Progressive Metal Stamping

- Best Feature: Precision and Accuracy
- Sequential operations on the same press for lowest unit cost

Compound Stamping

- Best Feature: Superior accuracy between holes & trim edge
- Commonly single-hit die with internal & external aspects of a part in one press stroke

Automation Capabilities

- In-Die Tapping
- In-Die Hardware Insertion
- In-Die Labeling

Drawn parts up to 5 inches in depth

STAMPING EQUIPMENT

61 Presses

- Ranging from 25 to 1000 T
- 20 Small (25-80 T)
- 20 Medium (80-200 T)
- 12 Large (200-300 T)
- 9 X-Large (500-1000 T)
- 60" Servo Feed Capability
- Press speeds up to 400 SPM

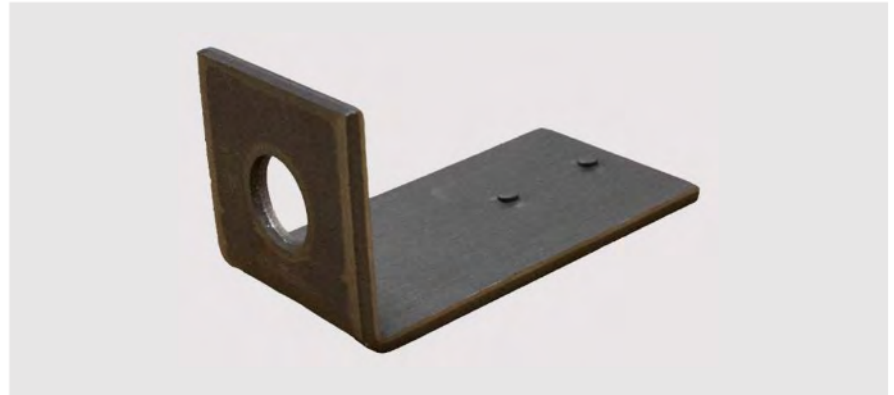
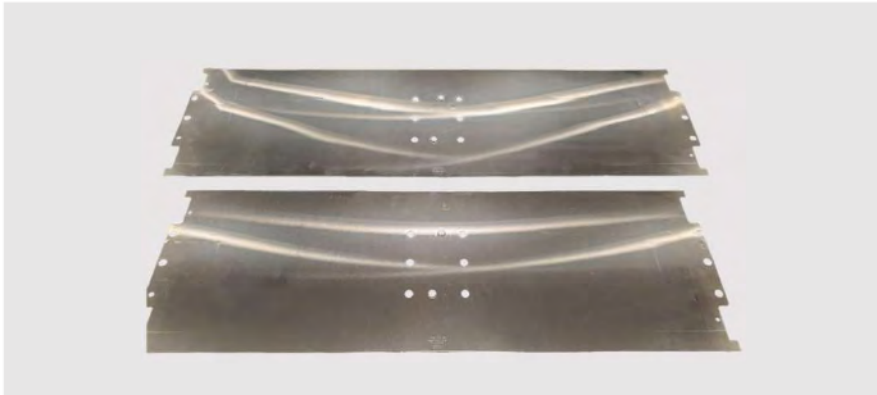
Press Bed sizes up to 192" x 55"

- In-Die Component Insertion Capabilities
- Die Transfer Program



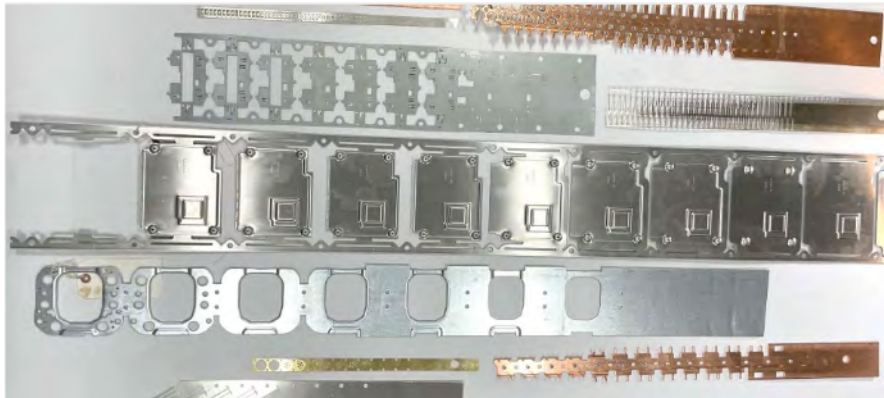
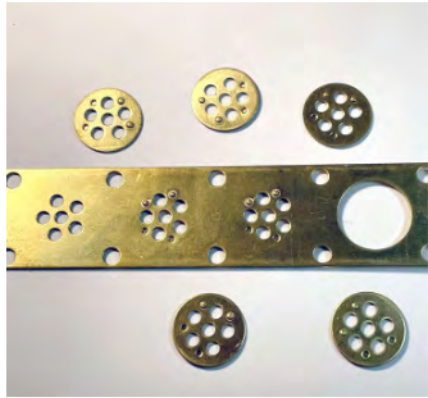
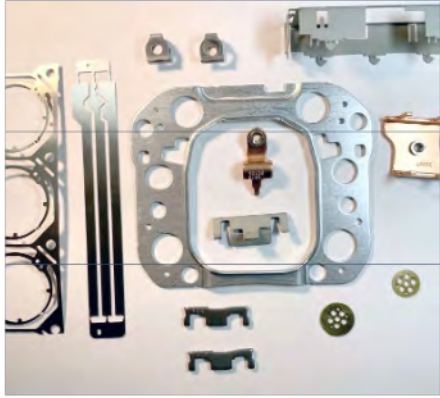


STAMPING EXAMPLES





HIGH SPEED PRESS CAPABILITIES





BROWNSVILLE (TX) CAPABILITIES



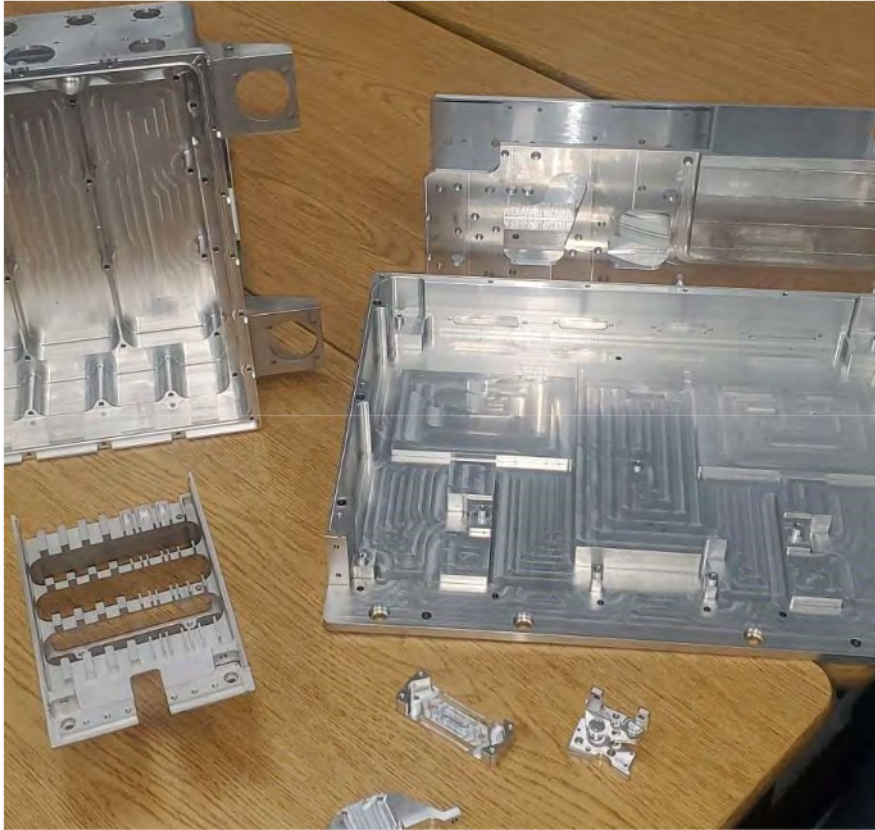


MACHINING CAPABILITIES





CNC MACHINING EXAMPLES



FABRICATION EQUIPMENT

Full Light and Heavy Fabrication Facilities

- Single component to Full Assembly
- All finishing operations are supported

State-of-the-Art Amada Equipment

- 3 - 33 Ton High Speed Turret Presses
- 1 - 50 Ton Turret Press
- 1 - 6000 Watt Fiber Laser with 10 shelf rack and auto unload
- 1 - 4000 Watt CW Co2 Laser w/ Nitrogen
- 1 - 220 Ton Press Brake with a 170" bed
- 1 - 100 Ton Press Brake
- 10 - 88 Ton electric/hydraulic Press Brakes
- 2 - 50 Ton Press Breaks
- 2 - 35 Ton Press Brakes

Additional Equipment

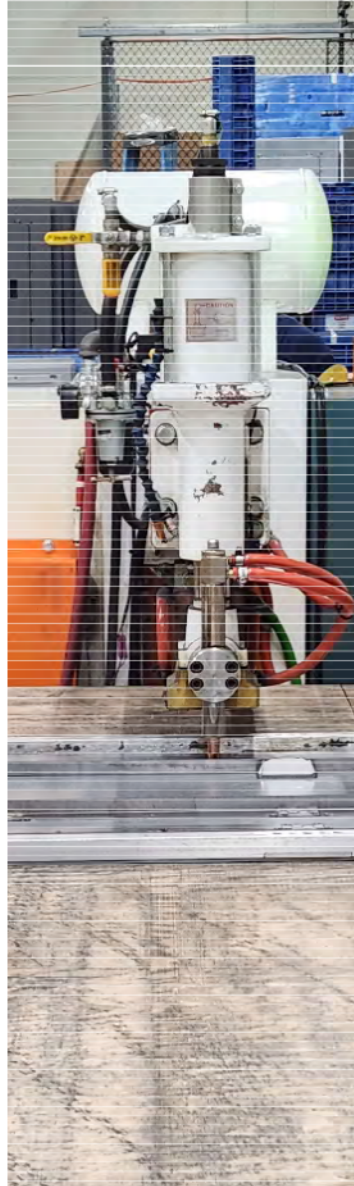
- 2 - 3000 Watt Lasers (1 Fiber, 1 Co2)
- 1 - 30 Ton High Speed Turret
- 6 - Press Brakes (Ranging from 20 Ton to 175 Ton)
- 1 - ¼" x 10 foot CNC hydraulic shear
- 4 - 75 kVa spot welders
- 6 - Hardware Insertion Machines (Pem and Haeger)

larsenmfg.com | larsen-tella.com



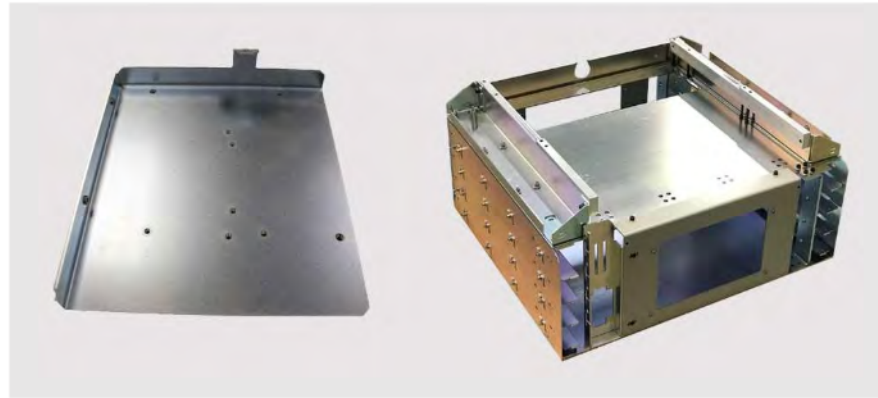
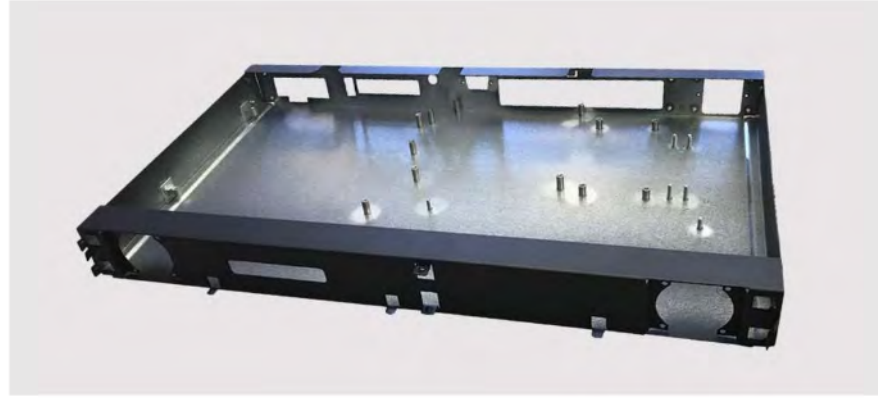
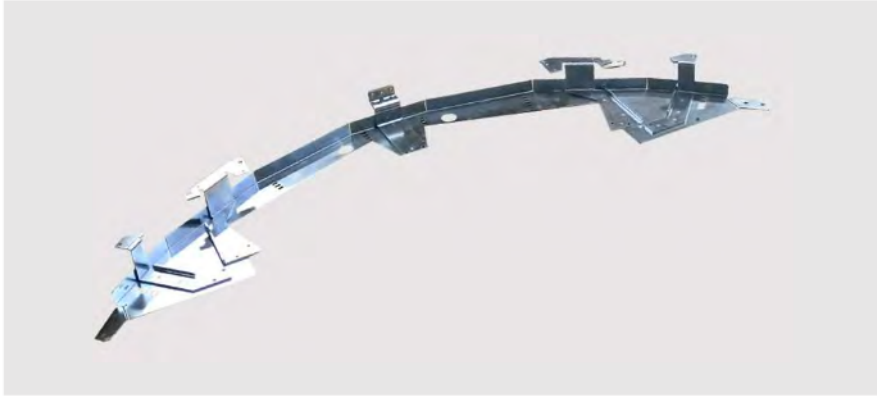
FABRICATION EQUIPMENT

- MIG/TIG Welders, Spot Welders
- CD Stud Welding & Polishing
- Robotic Welding
- Hardware Insertion Equipment
- Prototype cell for quick turns on new parts
- Versatile Assembly Cell Layout



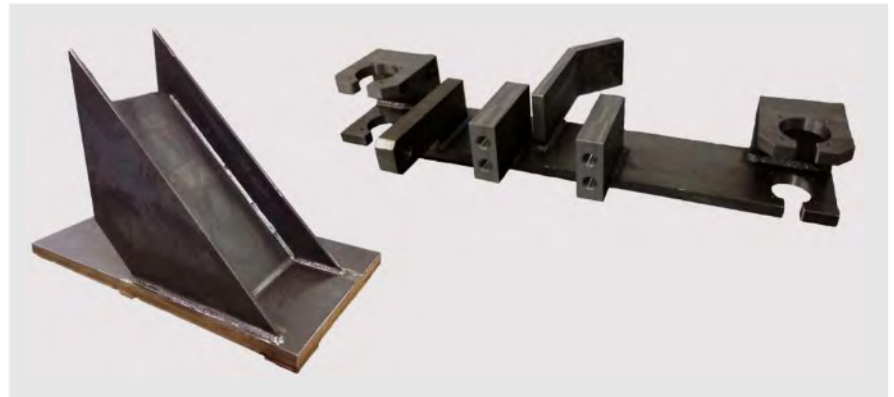
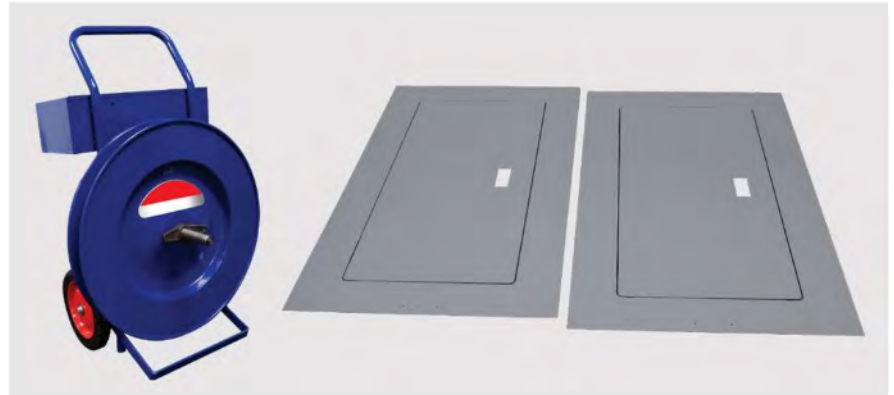


LIGHT FABRICATION EXAMPLES





HEAVY FABRICATION EXAMPLES





larsenmfg.com | larsen-tella.com

IN-HOUSE POWDER COATING

- Our state of the art, custom, continuous Powder Paint line is designed to handle a wide range of part sizes and color requirements
- Our line's system and processes allow us to handle both high volume and high mix jobs
- 5 stage wash includes eco-friendly washing and etching (phosphate-free)
- Post wash drying process
- Large powder booth accommodates variety of part sizes
- Downdraft containment system in place for ventilation, eliminates contamination
- Custom order powder in thousands of colors, textures and finishes
- Programmable curing oven in place for custom curing needs, based on part requirements and applications
- Added auto-spray capability in 2021

ASSEMBLY SERVICES

- Larsen does complete and partial assembly
- We purchase components from customer's approved suppliers if required in their assemblies
- From simple sub-assemblies to large complex parts including electronics
- Mechanical and Electrical assembly
- We establish dynamic cells complete with all tooling, fixturing and testing equipment (i.e. continuity testing)



SUSTAINABILITY FOCUSED

- Sustainability is key to Larsen's continuous improvement supported by all levels of organization

Efforts Include:

- High efficiency lighting
- Installed a high-efficiency HVAC system and made improvements to finishing systems (ovens, booths and air control)
- Zero-VOC paint, resulting in better environmental air quality and a safer working environment
- Filtration and reuse systems that significantly increase the life of our water baths and reduce water usage and wastewater
- Recycling to reduce solid waste
- Returnable/Reusable packaging for our products





LARSEN TX / MX BORDER COVERAGE EL PASO / JUAREZ (SOUTHWEST) BROWNSVILLE / REYNOSA (SOUTHEAST)





LARSEN MEXICO SALES COVERAGE



THANK YOU FOR YOUR TIME

Contact Dan Palmieri -
Business Development Director
with any questions
Email: dpalmieri@larsenmfg.net
Cell: 708.287.5288

Follow us on social media



Larsen Manufacturing



Larsen Manufacturing LLC



@Larsen_MFG



Larsen Manufacturing LLC

larsenmfg.com | larsen-tella.com