



FABRICATION



STAMPING



WELDING



POWDER COATING

LARSENMFG.COM



**VERTICAL**  
**FABRICATION**  
**INTEGRATION**  
**MANUFACTURING**  
**STAMPING**

ASSEMBLY  
 QUALITY  
 WAND DEANELING  
 PACKAGING  
 EARLY PRODUCTION  
 INVOLVEMENT  
 SUPPLIER  
 TOOL PPAP  
 DESIGN  
 BUILD  
 PROTOTYPE  
 MACHINING  
 WELDING FIBER  
 COATING TIG  
 CNC  
 HIGH SPEED  
 TURRET  
 PUNCH  
 SHORT-RUN  
 MIG  
 HARDWARE INSERTION  
 CONTRACT  
 POWDER  
 EDM  
 PROCESSES  
 LASER

2024



PACKAGING & DISTRIBUTION



INSPECTION



ASSEMBLY

LARSEN-TELLA.COM



YOUR SINGLE SOURCE PRECISION METAL PRODUCTS

# OUR HISTORY

**1946:**  
Leonard Larsen Sr. joins Algonquin Tool & Die.

**1955:**  
Algonquin Tool becomes Electro-Metal Products Corporation. Leonard Larsen joins Electro-Metal Products in 1960s.

**1995:**  
EMP is sold.



**1999:**  
Dave and Denis Larsen, grandsons of Leonard Larsen Sr., open Larsen Manufacturing.

**2001:**  
Larsen establishes a location in El Paso, TX due to demand for high quality metal stamping in the border region. Larsen El Paso moves in 2006 to a larger facility.

**2011:**  
Larsen purchases a new facility within one mile of its original location.

**2015:**  
Larsen adds full scale contract manufacturing and assembly to service, offering to accommodate for customer needs.

**2021:**  
The Paint Division acquires an auto-spray booth.

**2023:**  
Larsen adds 800T press.

**1950s:**  
Algonquin Tool enters the world of electronics, manufacturing TV tuners and enclosures for the likes of Admiral TV.

**1970s:**  
TV production slows. EMP diversifies into new markets to fuel the company's continued growth.

**2009:**  
Larsen launches a Metal Fabrication Division, increasing the range of capabilities.

**2013:**  
Larsen introduces a Specialty Fabrication Unit to meet demand for large assembly and complex fabrication. Specialty moves to its current location in 2016.

**2018:**  
The Powder Coat Paint Division is established in Specialty.

**2022:**  
Larsen acquires Tella Tool & Mfg, operating as Larsen Tella LLC.

**2024:**  
Larsen celebrates 25 years in business.



<b>Metal Stamping &amp; Tooling</b>	1201 Allanson Rd., Mundelein IL	<b>80,000 Sq/ft</b>
<b>Fabrication, Assembly &amp; CNC Machining</b>	401 Terrace Dr., Mundelein IL	<b>86,000 Sq/ft</b>
<b>Specialty Fabrication, Welding, Powder Coating, Assembly</b>	930 Turret Ct., Mundelein IL	<b>46,000 Sq/ft</b>
<b>Logistical Warehousing JIT Inventory Control</b>	1300 Allanson Rd., Mundelein IL	<b>97,000 Sq/ft</b>
<b>Metal Stamping &amp; Assembly</b>	12150 Rojas Dr., El Paso TX	<b>70,000 Sq/ft</b>
<b>Metal Stamping &amp; Assembly</b>	3401 Nafta Pkwy., Brownsville TX	<b>51,000 Sq/ft</b>
<b>Logistical Warehousing JIT Inventory Control</b>	3201 Nafta Pkwy., Brownsville TX	<b>40,000 Sq/ft</b>



## OUR FACILITIES



MIDWEST HEADQUARTERS  
Larsen Manufacturing LLC  
1201 Allanson Road  
Mundelein, IL 60060



SOUTHWEST  
Larsen Manufacturing / El Paso  
12150 Rojas Drive, Suite E  
El Paso, TX 79936



FABRICATION & MACHINING TECHNOLOGY CENTER  
Larsen Manufacturing LLC  
401 Terrace Drive  
Mundelein, IL 60060



SOUTHEAST  
Larsen Tella / Brownsville  
3401 Nafta Parkway  
Brownsville TX, 78526

## VERTICAL INTEGRATION

### Everything From Concept To Distribution

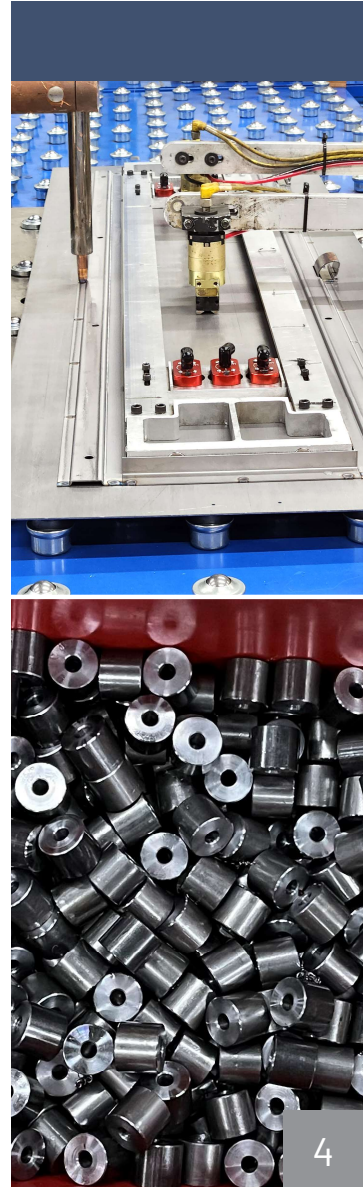
Larsen Manufacturing, and Larsen Tella, are positioned to provide complete service to the metal manufacturing industry.

Because we have the capabilities for any requirement, our customers can rely on a single point of contact to take a project from start to finish.

This one-stop shop approach is a benefit to customers, who no longer need to deal with multiple resources or micro-manage every aspect of the process. We can not only service the client fully, but also supply efficiencies, reduce costs, and cut down on delivery and transportation delays.

By taking direct ownership of various stages of the production process, instead of outsourcing, Larsen is able to streamline its operations with a greater gain to our partners.

Early Supplier Involvement  
Design For Manufacturing  
Prototype *(Development)*  
Fabrication *(Short-run Production)*  
Tool Design  
Tool Build  
PPAP *(Quality)*  
Production *(Stamping & All Support Processes)*  
Machining  
Powder Coating  
Contract Manufacturing





## DIVERSE MARKETS INCLUDE

- ✔ Automotive
- ✔ Electronics
- ✔ Energy
- ✔ Industrial
- ✔ Medical
- ✔ Appliance
- ✔ Entertainment
- ✔ Aerospace/Aviation
- ✔ Communications



[larsenmfg.com](http://larsenmfg.com) | [larsen-tella.com](http://larsen-tella.com)

## CUSTOMER FOCUS VA/VE

### Early Supplier Involvement (ESI)

- Allows time to optimize design efficiencies early on
- Re-design / Re-work is reduced or even eliminated

### Drive cost reduction through Design for Manufacturability (DFM)

- Material Type, Material Reduction & Material Optimization
- Hardware Elimination & Alternative Fastening Options
- Automation to limit Secondary Operations
- Finishing Requirements and Options
- Tooling Cost Optimization
- Critical Dimensioning

## VA/VE EXAMPLES

### Auto Spray Booth:

The addition of the robotic guns automates the paint line as much as possible. The booth expansion allows us to take on more “paint only” opportunities. We will still be capable of handling smaller runs via manual sprayers as needed.

### Wrinkle Machine:

This new equipment takes the material and wrinkles it through the machine.





## QUALITY FOCUSED



- IATF16949:2016
- ISO 9001:2015



- IATF 16949:2016
- ISO 9001:2015
- ISO 14001:2015



## Virtual Audits and Plant Tours Quality Processes Includes:

- Process control & monitoring at all phases of production
- Vision and Laser scanner checks all flat blanks
- All first off parts inspected and green tagged
- Automotive Industry Action Group (AIAG) PPAP and FAI compliant
- We deploy Lean, Six Sigma, 8D, and
- 5S processes

**After safety, quality is Larsen's number 1 priority.**  
**We know that if we make quality parts on a consistent basis**  
**we will never shut down our customers' production lines.**





## IN-HOUSE TOOLING

### Progressive Metal Stamping

- Best Feature: Precision and Accuracy
- Sequential operations on the same press for lowest unit cost

### Compound Stamping

- Best Feature: Superior accuracy between holes & trim edge
- Commonly single-hit die with internal & external aspects of a part in one press stroke

### Automation Capabilities

- In-Die Tapping
- In-Die Hardware Insertion
- In-Die Labeling

**Drawn parts up to 5 inches in depth**

## STAMPING EQUIPMENT

### 61 Presses

- Ranging from 25 to 1000 T
- 20 Small (25-80 T)
- 20 Medium (80-200 T)
- 12 Large (200-300 T)
- 9 X-Large (500-1000 T)
- 60" Servo Feed Capability
- Press speeds up to 400 SPM

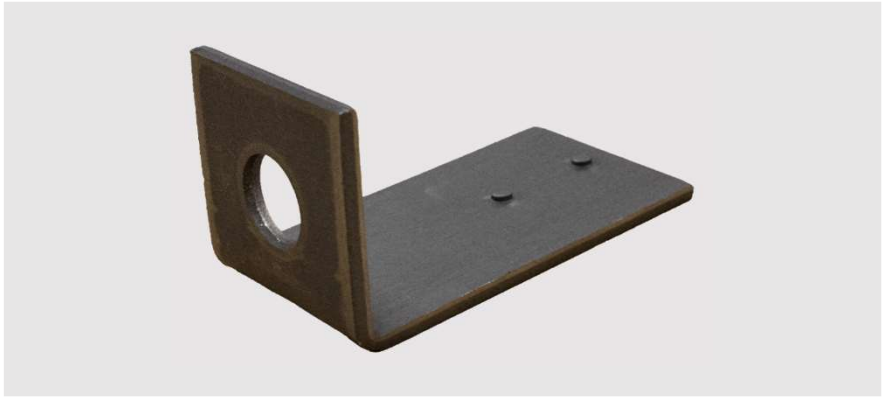
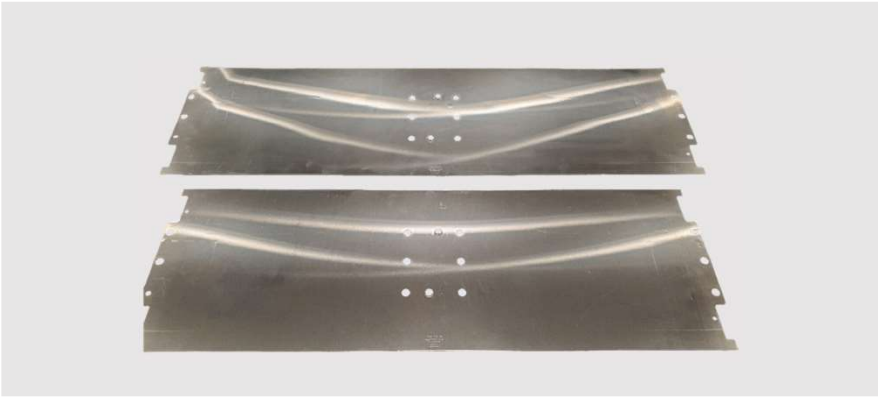
### Press Bed sizes up to 192" x 55"

- In-Die Component Insertion Capabilities
- Die Transfer Program



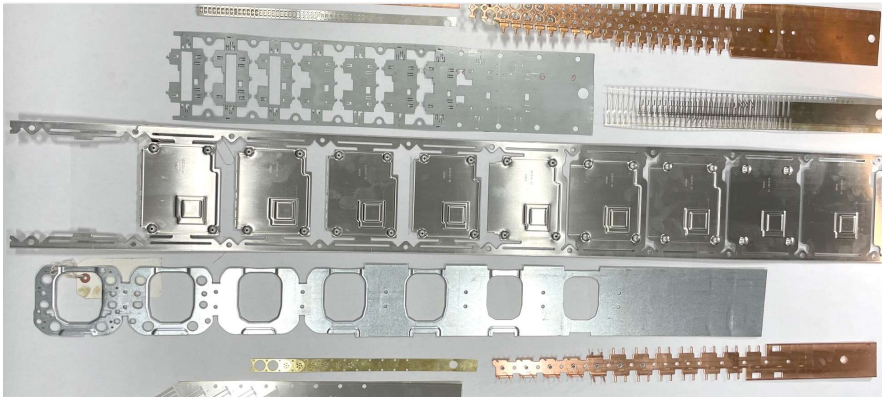
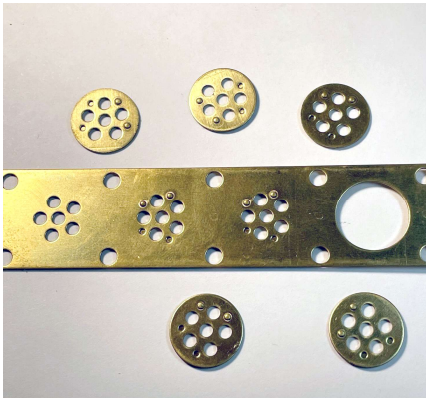
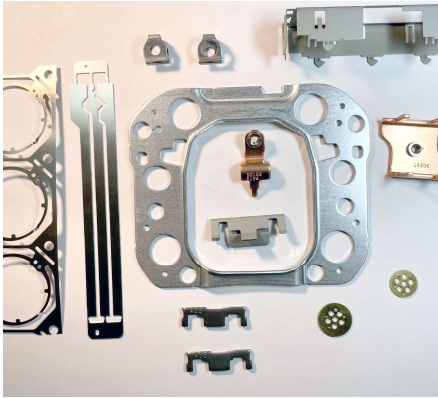


# STAMPING EXAMPLES





# HIGH SPEED PRESS CAPABILITIES





# BROWNSVILLE (TX) CAPABILITIES





# MACHINING CAPABILITIES





# CNC MACHINING EXAMPLES



## FABRICATION EQUIPMENT

### Full Light and Heavy Fabrication Facilities

- Single component to Full Assembly
- All finishing operations are supported

### State-of-the-Art Amada Equipment

- 3 – 33 Ton High Speed Turret Presses
- 1 – 50 Ton Turret Press
- 1 – 6000 Watt Fiber Laser with 10 shelf rack and auto unload
- 1 – 4000 Watt CW Co2 Laser w/ Nitrogen
- 1 – 220 Ton Press Brake with a 170" bed
- 1 – 100 Ton Press Brake
- 10 – 88 Ton electric/hydraulic Press Brakes
- 2 – 50 Ton Press Breaks
- 2 – 35 Ton Press Brakes

### Additional Equipment

- 2 – 3000 Watt Lasers (1 Fiber, 1 Co2)
- 1 – 30 Ton High Speed Turret
- 6 – Press Brakes (Ranging from 20 Ton to 175 Ton)
- 1 – ¼" x 10 foot CNC hydraulic shear
- 4 – 75 kVa spot welders
- 6 – Hardware Insertion Machines (Pem and Haeger)

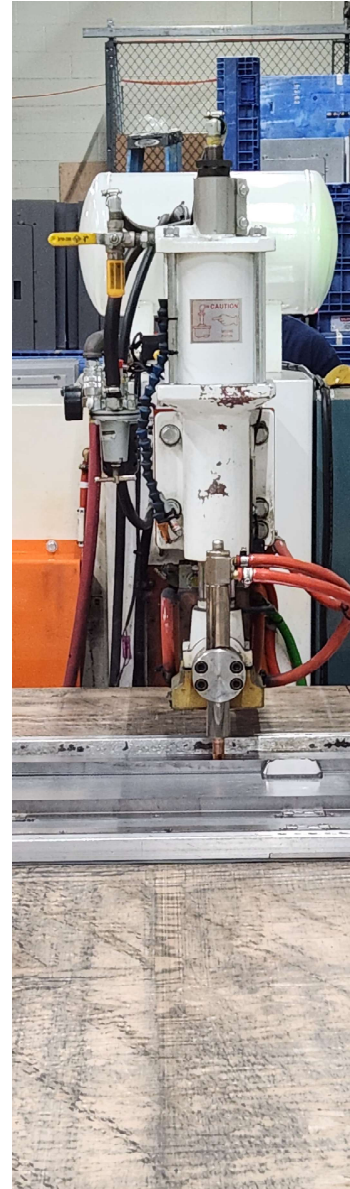
[larsenmfg.com](http://larsenmfg.com) | [larsen-tella.com](http://larsen-tella.com)





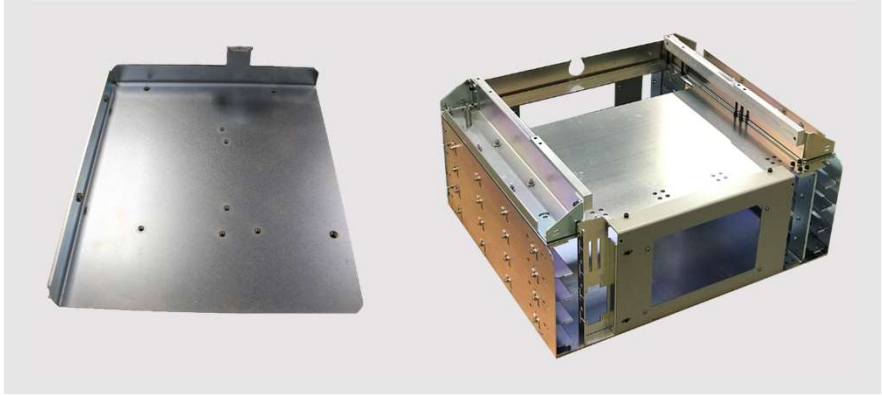
## FABRICATION EQUIPMENT

MIG/TIG Welders, Spot Welders  
CD Stud Welding & Polishing  
Robotic Welding  
Hardware Insertion Equipment  
Prototype cell for quick turns  
on new parts  
Versatile Assembly Cell Layout



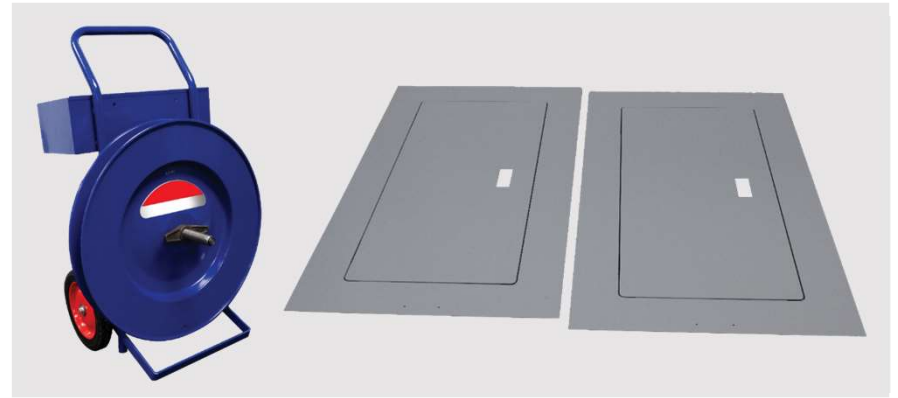


# LIGHT FABRICATION EXAMPLES





## HEAVY FABRICATION EXAMPLES





[larsenmfg.com](http://larsenmfg.com) | [larsen-tella.com](http://larsen-tella.com)

## IN-HOUSE POWDER COATING

- Our state of the art, custom, continuous Powder Paint line is designed to handle a wide range of part sizes and color requirements
- Our line's system and processes allow us to handle both high volume and high mix jobs
- 5 stage wash includes eco-friendly washing and etching (phosphate-free)
- Post wash drying process
- Large powder booth accommodates variety of part sizes
- Downdraft containment system in place for ventilation, eliminates contamination
- Custom order powder in thousands of colors, textures and finishes
- Programmable curing oven in place for custom curing needs, based on part requirements and applications
- Added auto-spray capability in 2021

## ASSEMBLY SERVICES

- Larsen does complete and partial assembly
- We purchase components from customer's approved suppliers if required in their assemblies
- From simple sub-assemblies to large complex parts including electronics
- Mechanical and Electrical assembly
- We establish dynamic cells complete with all tooling, fixturing and testing equipment (i.e. continuity testing)



## SUSTAINABILITY FOCUSED

- Sustainability is key to Larsen's continuous improvement supported by all levels of organization

### Efforts Include:

- High efficiency lighting
- Installed a high-efficiency HVAC system and made improvements to finishing systems (ovens, booths and air control)
- Zero-VOC paint, resulting in better environmental air quality and a safer working environment
- Filtration and reuse systems that significantly increase the life of our water baths and reduce water usage and wastewater
- Recycling to reduce solid waste
- Returnable/Reusable packaging for our products





# LARSEN TX / MX BORDER COVERAGE

## EL PASO / JUAREZ (SOUTHWEST)

## BROWNSVILLE / REYNOSA (SOUTHEAST)





# LARSEN MEXICO SALES COVERAGE





**THANK YOU FOR YOUR TIME**

Contact Dan Palmieri -  
Business Development Director  
with any questions  
Email: [dpalmieri@larsenmfg.net](mailto:dpalmieri@larsenmfg.net)  
Cell: 708.287.5288

Follow us on social media



Larsen Manufacturing



Larsen Manufacturing LLC



@Larsen\_MFG



Larsen Manufacturing LLC

[larsenmfg.com](http://larsenmfg.com) | [larsen-tella.com](http://larsen-tella.com)